



*Young Canadian Simmental Association*

---

## **Bylaws & Rules**

## **Table of Contents**

<b>Preamble</b>	<b>Page 3</b>
<b>Article 1: Name, Objectives &amp; Purpose</b>	<b>Page 3</b>
<b>Article 2: Membership, Voting, Fees and Approval of Provincial/Regional Junior Associations</b>	<b>Page 3</b>
<b>Article 3: Directors, Officers and Executive Committee of National YCSA Board of Directors</b>	<b>Page 4</b>
<b>Article 4: Meetings</b>	<b>Page 6</b>
<b>Article 5: Governance of the YCSA</b>	<b>Page 6</b>
<b>Article 6: Place of Business</b>	<b>Page 7</b>
<b>Article 7: Description of YCSA Adult Advisors</b>	<b>Page 7</b>
<b>Article 8: YCSA Coordinator</b>	<b>Page 8</b>
<b>YCSA Regional Classic &amp; National Classic Rules &amp; Regulations</b>	<b>Page 9</b>
<b>YCSA Cattle Show Rules</b>	<b>Page 12</b>
<b>YCSA Board of Directors</b>	<b>Page 18</b>

## **Preamble**

The Young Canadian Simmental Association hereinafter referred to as the YCSA or YCS, is the official program of the youth activities of the Canadian Simmental Association (CSA). The YCSA and its members shall be subject to all rules and bylaws of the Canadian Simmental Association. The guidelines of the YCSA, as ratified by the membership of the YCSA and approved by the Board of Directors of the CSA, are to serve as a framework within which the affairs of the YCSA shall be conducted. Amendments to the guidelines as well as all policy decisions made by the YCSA Board of Directors and or the YCSA membership shall be subject to final approval by the Canadian Simmental Association board of directors before said decisions become official YCSA policy.

## **Article 1**

### **Name, Objectives & Purpose**

#### 1. NAME

The name shall be called the “Young Canadian Simmental Association”. It is an entity of and shall operate within the scope of the bylaws, rules, and policies of the Canadian Simmental Association.

#### 2. OBJECTIVES & PURPOSE

The Young Canadian Simmental Association Objectives & Purposes are as follows:

- I. To improve and promote Canadian Simmental Genetics
- II. To improve and develop the capabilities of youth, both individually and through group participation, in breeding, raising, exhibiting, and promoting Simmental cattle.
- III. To develop and improve leadership, sportsmanship, and moral character among its members.
- IV. To direct, assist, and guide provincial YCSA organizations with their youth programs and activities.

## **Article 2**

### **Membership, Voting, Fees and Approval of Provincial/Regional Junior Associations**

#### 1. MEMBERSHIP

Active members shall be persons twenty five years of age or younger as of January 1st. Membership is a requirement for participation at the YCSA National Classic, Provincial Classic, and Annual Meeting.

#### 2. VOTING

Voting rights shall be vested exclusively with active members.

#### 3. FEES

Membership fees are included in the fee paid to the CSA for a YCSA membership. Members are entitled to all privileges of said organization and, in addition, all privileges of membership in the Canadian Simmental Association.

**4. APPROVAL OF PROVINCIAL/REGIONAL JUNIOR ASSOCIATIONS**

Only provincial organizations recognized by both the YCSA and CSA will be permitted the use and benefits accorded to YCSA activities and events.

- I. A list of the Provincial/Regional YCSA officers and directors is submitted to the CSA on or before January 1<sup>st</sup> of each year. The name of the National Board representative shall be submitted to the CSA prior to the YCSA Annual General Meeting.
- II. All Provincial/Regional YCSA officers and directors shall be members of the YCSA.
- III. YCSA Provincial/Regional Boards of Directors shall consist of not less than 4 individuals and not more than 9 individuals.
- IV. YCSA Provincial/Regional Boards of Directors shall hold an Annual General Meeting.
- V. YCSA Provincial/Regional Boards of Directors shall consist of the following Officers: President, Vice President, Secretary and Treasurer
- VI. At the first meeting of the Board of Directors following the Annual General Meeting or at such other times as may be required, the Directors shall elect from among themselves a President, a Vice President, and a Second Vice-President and such other Offices as the Board of Directors may determine.
- VII. No provisions of the Provincial/Regional association shall be in conflict with the YCSA Policies & Procedures or CSA constitution, bylaws or general rules and regulations.

**ARTICLE 3**

**Directors, Officers and Executive Committee of National YCSA Board of Directors**

**1. BOARD OF DIRECTORS**

- I. The National Board of Directors of the YCSA shall consist of no less than 6 individuals and no more than 9 individuals.
- II. Each provincial/regional YCSA Board shall have one representative to the National YCSA Board of Directors. In the absence of a provincial/regional board, the National Board may appoint a representative from that province/region. The length of term shall be renewed at each Annual General Meeting.
- III. The active membership in attendance of the YCSA Annual General Meeting shall elect annually, by majority vote, one of their members to serve as a member of the board of directors for a two year term.

## 2. OFFICERS

- VIII. At the first meeting of the Board of Directors following the Annual General Meeting or at such other times as may be required, the Directors shall elect from among themselves a President, a Vice President, and a Second Vice-President and such other Officers as the Board of Directors may determine.
  - IX. The Executive of the Association shall consist of the President, First Vice President, and Second Vice President and such other Officer or Officers as the Board of Directors may determine.
  - X. The Executive shall assist the Directors in carrying out the policies established by the Board of Directors. The Executive shall exercise such powers as the authorized by the Board of Directors. During the recess of the Board, the Executive shall exercise the all the powers of the Board and shall report to the Board of Directors in writing of any and all action taken.
  - XI. The term of office of a member of the Executive: (a) commences immediately on the Officer being declared elected at the first meeting of the Board of Directors following the Annual General meeting; and (b) expires immediately on the Directors being declared elected at the next Annual General Meeting.
- I. **President:** the President shall preside over all Association meetings, meetings of the board of directors and meetings of the executive committee.
  - II. **First Vice President:** the First Vice President shall, in the absence, disability or inability of the President to act, perform the duties exercise the powers of the President, and shall perform such other duties as the President shall prescribe.
  - III. **Second Vice President:** The Second Vice President shall attend all meetings of the board of directors and perform such duties as the President shall prescribe.
  - IV. **Vacancy:** In case of any vacancy on the Board of Directors, a successor shall be selected from that area to complete the unexpired term by the remaining members of the board.

## 3. EXECUTIVE COMMITTEE

- I. **Powers of the Executive Committee:** All powers of the Board of Directors shall be, and they are hereby vesting in the Executive Committee. The Executive Committee is empowered to direct the affairs of the organization between National Classics/Annual Meetings of the membership or meetings of the board of directors.

## **ARTICLE 4**

### **Meetings**

1. MEMBERSHIP MEETINGS
  - I. **Annual Meetings:** The Annual Meeting of the membership shall be held at the National Classic for the purpose of electing a board or director of the organization and conducting such other business as may be brought before the meeting.
  - II. **Notice of Meetings:** Written or printed notice of the Annual Meeting, stating the place, date and hour of meeting, the purpose or purposes for which the meeting is being called, shall be mailed not less than 30 days before the date of the meeting.
  - III. **Quorum:** A quorum for an annual meeting for the national board shall consist of 10 active members, in good standing and present. Provincial/Regional YCSA board's quorum shall consist of 4 active members, in good standing and present.
  - IV. **Parliamentary Procedures:** Standard parliamentary procedure as defined by Roberts Rules of Order shall be followed at all meetings of the Association membership.
  - V. **Minutes & Financials:** All meeting minutes from Provincial/Regional YCSA meetings as well as financial statements are to be sent to the YCSA Coordinator following each of their meetings to have on file.
2. BOARD OF DIRECTORS MEETINGS
  - I. **Meetings:** An annual meeting of the Board of Directors shall be held at such time and place as may be fixed by the Executive Committee of the organization for the purpose of electing officers of the organization and conducting such other business as may be brought before the meeting. Special meetings of the Board of Directors may be held at such time and place as designated by notice, whenever called in writing by the directors of the President or by a majority of the Board of Directors.
  - II. **Parliamentary Procedure:** Standard parliamentary procedure as defined by Roberts Rules of Order shall be followed at all meetings of the Board of Directors.

## **ARTICLE 5**

### **GOVERNANCE OF THE YCSA**

- I. Provincial YCSA boards look after Provincial affairs with guidance (when needed) from adult advisor.
- II. Provincial YCSA boards appoint 1 member to the National YCSA Board.

- III. National YCSA Board to set direction of programming and fundraising, with assistance from YCSA coordinator.
- IV. All decisions of YCSA Board are to be approved by the CSA Board.
- V. Governance model is further outlined for the YCSA in Figure 1 below.

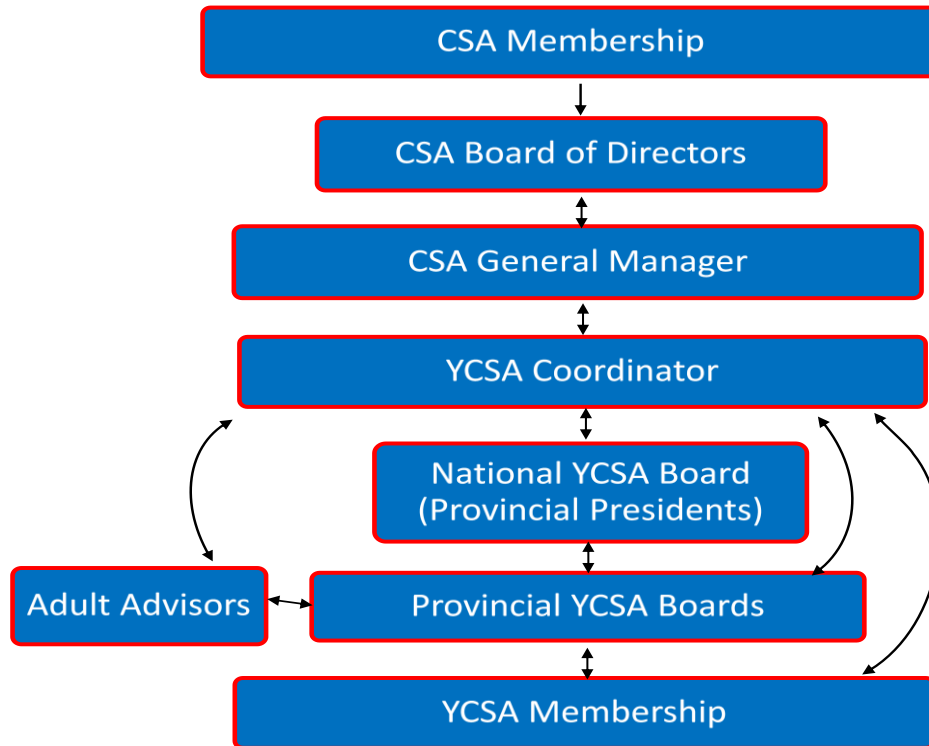


Figure 1. YCSA Governance Model

**ARTICLE 6**

**PLACE OF BUSINESS**

- 1. The official place of business for this organization shall be the Canadian Simmental Association, Calgary, Alberta.

**ARTICLE 7**

**DESCRIPTION OF YCSA ADULT ADVISORS**

- I. Adult Advisor to be selected by Provincial Associations for a 1 year term (both CSA and YCSA), and are not necessarily a provincial director. Term to be renewed annually.
- II. Adult Advisors are to advise provincial YCSA directors when needed.

- III. Communication flows in the process where the Adult Advisors are encouraged to take questions to Provincial President and YCSA coordinator for any further clarification.
- IV. Adult Advisors are there to support and are not to be involved with governance or direction of the YCSA.

## **ARTICLE 8**

### **YCSA COORDINATOR**

The coordinator will provide YCSA coordinator services subject to the direction of the CSA General Manager and as per their employment agreement with the Canadian Simmental Association. This will include but not be limited to:

1. The coordinator agrees to hold itself available to render to the YCSA the services necessary to the function of the organization itself.
2. The coordinator shall diligently devote such time and best efforts as are reasonable required to provide the services necessary and shall perform its duties conscientiously, efficiently and to the best of his or her ability.
3. Coordinate the Canadian Simmental Association's junior member program (YCSA) with focus on the following responsibilities;
  - I. Oversee, develop and administer the YCSA (e.g. attend and help plan Provincial and National Classics). Although all efforts will be made the overlap of Classics on the same date, the coordinator in consultation with the CSA General Manager and YCSA National President will decide which event the Coordinator will attend.
  - II. Provide guidance and offer direction to National and provincial boards of directors of the YCSA.
  - III. Develop and adhere to budgets in cooperation with the National YCSA board and the Canadian Simmental Association – YCSA committee chairperson.
  - IV. Develop new and expand current YCSA programming.
  - V. Be a liaison between the CSA board and the National YCSA board – provide quarterly update reports to the CSA board.
  - VI. Be a liaison between the YCSA and American Simmental Association and youth program.
  - VII. Be the lead in communication between the CSA and the National YCSA Board including meeting materials, board updates, and any other information requested.
  - VIII. Assist in the implementation of the YCSA communications strategy, including coordinating YCSA news and material for publication in the Simmental Country, the CSA E-Newsletter and assisting in the updating of the YCSA portion of the CSA website, and YCSA social media.



## **YCSA Regional/Provincial and National Classic Rules & Regulations**

**All Rules are at the discretion of the YCSA National Board or the Regional/Provincial board**

### **1. Registration, Entry and Fees**

- a. Individual entry forms, individual memberships and required fees must be postmarked by the entry deadline to avoid penalty.
- b. Penalties will be outlined on the entry forms.
- c. All cheques must be written to the appropriate YCSA region and must accompany the entry form(s).
- d. Entry deadline dates, fees, and special rules are located with each entry form.
- e. All entries must be returned to the person(s) outlined on the entry form(s).
- f. Application for YCSA membership will appear on all entry forms.
- g. All entry forms will include the entrants, as well as the entrants' parent/guardian, signature in recognition of the YCSA Rules and the stated YCSA Disclaimer.
- h. All entrants/parents/guardians must sign all Disclaimers and Points of Recognition for entry into the Classic to be official.
- i. YCSA members traveling to the National Classic from out of province are eligible for travel reimbursement up to a maximum of \$300. \$100 is granted for every province away from the host province up to the maximum of \$300.

### **2. Eligibility**

- a. Participants in the National Classic as well as all Regional Classics are required to hold an individual YCSA membership.
- b. Current members must have paid the annual \$10 activity fee to compete in any YCSA events.
- c. Participants must be 25 years and younger as of January 1<sup>st</sup> of competition year.
- d. YCSA members are eligible to compete at any of the Regional events.

### **3. Health Requirements for Cattle**

- a. All cattle must meet the health requirements for the province where the event is held. Any questions regarding health requirements should be directed to your local or provincial veterinarian.

### **4. Individual Competition**

- a. Individual competition may consist of, but are not limited to, the following events: Sire Summary Quiz, Herdsman Quiz, Judging Contest, Public Speaking, Conformation Show, Showmanship, Print Marketing, Sales Talk, Photography, Essay, & Interview.
- b. At all Classics (National or Regional) the top 10 scores in each non conformation competition will receive points. The highest score will receive

10 points with each subsequent score receiving one less point, down to 1 point for the 10<sup>th</sup> score.

- c. At all Classics (National or Regional) conformation division winners will receive 10 and 9 points and remaining class placings will receive points starting at 8 with each subsequent placing receiving one less point, down to 1 point for the 8<sup>th</sup> placing.
- d. Contestants must compete in Judging, Herdsman and Sire Summary Quiz at the scheduled competition time unless prior arrangements have been made to be eligible for Showmanship and Conformation Classes or to be allowed to fit, show or assist members with cattle in any way.

#### **5. High Point Competition**

- a. Only an individual's highest placing in the Conformation Classes will score points. Conformation points are awarded only to the entrants name as seen on the entry form.
- b. Points cannot be transferred to other competitors in any manner.
- c. The High Point competition will be determined by points won in all but the competitors' lowest score in the individual or group competitions.
- d. Pee Wee's will have participation prizes and no aggregate.
- e. Supreme High Point will be tabulated in the same manner. That competitor (excluding Novices) with the highest score will advance as the Supreme High Point recipient.
- f. At all Classics (National or Regional) the top 10 scores in each non conformation competition will receive points. The highest score will receive 10 points with each subsequent score receiving one less point, down to 1 point for the 10<sup>th</sup> score.
  - 1. 1<sup>st</sup>: 10 pts, 2<sup>nd</sup>: 9 pts, 3<sup>rd</sup>: 8 pts, 4<sup>th</sup>: 7 pts, 5<sup>th</sup>: 6 pts, 6<sup>th</sup>: 5 pts, 7<sup>th</sup>: 4pts, 8<sup>th</sup>: 3 pts, 9<sup>th</sup>: 2 pts, 10<sup>th</sup>: 1 pt.
  - 2. To qualify for this award the member must participate in Sire Summary and Herdsman Quiz, Judging, and Showmanship classes.
- g. At all Classics (National or Regional) conformation division winners will receive 10 and 9 points and remaining class placings will receive points starting at 8 with each subsequent placing receiving one less point, down to 1 point for the 8<sup>th</sup> placing.

#### **6. International Trip Award**

- a. The two High Point aggregates at the YCSA National Classic will be recipients of the travel award.
- b. Recipients must be a minimum of 16 years of age of the AJSA event/competition year and no more than 21 by January 1<sup>st</sup> of the event/competition year.

- c. The award will alternate between the AJSA National Classic and the IGS Summit Conference if applicable. Recipients will be notified in the new year which event they will be attending.
- d. An eligible Hi Point winner is only eligible to be awarded a total of two trips. The trips can be back to back and to the same event.
- e. Reasonable travel and registration expenses for the trip will be reimbursed to the participants by the YCSA. Participants are expected to travel to the event unaccompanied by a chaperone. Once at the event the YCSA Coordinator/Chaperone will be there to assist them. If a parent/guardian is accompanying the participant, they are responsible for all their own expenses.

## **7. Ties**

- a. Ties will be broken by comparing scores in the following events.
  - 1. 1<sup>st</sup> Tie-breaker = Judging
  - 2. 2<sup>nd</sup> Tie-breaker = Quiz
  - 3. 3<sup>rd</sup> Tie-breaker = Sales Talk

## **8. Pee Wee, Novice, Junior, Intermediate, and Senior division eligibility.**

- a. Pee Wee: 6 years and under as of January 1<sup>st</sup> of the competition year.
- b. Novice: 7-10 years as of January 1<sup>st</sup> of the competition year.
- c. Junior: 11-14 years as of January 1<sup>st</sup> of the competition year.
- d. Intermediate: 15-17 as of January 1<sup>st</sup> of the competition year.
- e. Senior: 18-25 as of January 1<sup>st</sup> of the competition year.

## **9. Conduct, Hearing Committee and Disciplinary Action.**

- a. Conduct:
  - 1. All competitors in attendance of Classics are expected to conduct themselves with dignity and respect.
  - 2. All competitors must abide by the on-site rules.
  - 3. Violations include, but are not limited to: misrepresentation of animals, vandalism, theft, fighting, unsportsmanlike conduct, failure to comply with directives of officials, being in possession of or under the influence of alcohol or other prohibited substances while on the competition grounds and/or in public areas.
  - 4. Violations of these standards will result in immediate review by the Hearing Committee.
  - 5. Alcohol in the barns and at YCSA activities is prohibited.
- b. Hearing Committee: Shall consist of attending representatives of the YCSA Board, CSA Board, and the YCSA Coordinator.
  - 1. An individual brought before the Hearing Committee may be accompanied by their parents or legal guardian.

2. Failure of an individual to appear before the hearing committee when called will be considered cause for the committee to take disciplinary action against the individual.
3. The committee, upon finding an individual in violation of the conduct rule, may take action as deemed necessary.

#### **10. Liability Provisions**

- a. YCSA Provincial organizations and the National organization are responsible to include in their entry forms, registration forms, information pages, and show catalogues, a Statement of Liability. The Statement, to be read as follows or in a similar context: *The CSA as well as the YCSA Provincial and National Committees and/or any of its employees and the Host Fairgrounds and/or any of its employees are not responsible for any accidents/thefts during the time prior to, during or after the event/classic.*

### **YCSA Cattle Show – Rules**

#### **1. Provincial/Regional & National Classic**

- a. The Classic may consist of the following conformation classes in the Purebred/Fullblood divisions: Heifer Calf, Yearling Heifer, Bred & Owned Yearling Female, 2yr Old Female, Mature Female, Bull Calf, Yearling Bull, Get of Sire, Breeder's Herd, and Progeny of Dam.
- b. The Classic may consist of the following conformation classes in the Commercial division: Heifer Calf, Bull Calf, Yearling Heifer, 2yr Old Female, and Mature Female.
- c. If there are 10 or less entries in the bred & owned division, all age divisions will be combined for one championship class that will be placed 1<sup>st</sup> to 10<sup>th</sup> for aggregate point.
- d. Age of animals is based on January 1<sup>st</sup> of the competition year.
- e. Animals entered in the commercial division must show Simmental characteristics. A committee will be designated to assess the significance of Simmental in commercial entries. The committee has the power and duty to disqualify any animals deemed to be showing very little or no Simmental influence. The committee decision is final.
- f. All entries in the Purebred/Fullblood classes must provide a CSA certificate of registration.
- g. Registered and Recorded cattle must have a legible tattoo which conforms to CSA records to be eligible. Tattoos may be inspected by show officials at time of arrival.
- h. All 2yr Old Females and Mature Females entered in the conformation classes must be accompanied by their natural calendar year calf(s).
- i. Rules will be published on the entry forms specific to each Classic.
- j. ET calves cannot be shown with their donor mothers.

- k. Recipient cows cannot be shown with ET calves.
- l. Rules will be published on the entry forms specific to each Classic.
- 2. No artificial filling and/or use of tranquilizers will be allowed. Violation will result in immediate review by the Hearing Committee.**
- 3. All livestock entries must be stalled by the published move-in time on the published move-in date. Livestock release follows the awards ceremony.**
- 4. Ownership Rules**
  - a. All entries in the Bred & Owned division must be bred by and owned by and registered as such under the entrants' name. A copy of the CSA registration paper must be provided during event registration.
  - b. All entries, excluding Bred & Owned, must be registered to the entrant, entrant's immediate family or entrant's immediate family farm, or registered as a 4H project of the entrant. A copy of the CSA registration paper or 4H certificate must be provided during event registration.
- 5. Parent participation is strictly forbidden. Violations will result in immediate dismissal from the competition or event. Senior members are encouraged to assist younger members.**

### **YCSA Classes:**

Adjustments to these classes are at the discretion of the regional/provincial boards.

#### **Team Grooming**

- a. Teams of 3 participants randomly selected from the same age division.
- b. 20 minute grooming competition.
- c. No clippers are to be used in preparation of animal.
- d. Animal must be washed and dried before the competition.
- e. Any fitting prior to the commencement of the competition will result in disqualification of the team.
- f. Paint products, or any product that alters the color of the animal may not be used.
- g. Teams must bring all of the necessary tools and products when entering the ring.
- h. Score: Knowledge and skill 35%, Teamwork 25%, Use of Equipment 20%, Final Appearance 15%, Presentation of the Animal 5% = 100%

#### **Group Classes**

Group classes are open to only purebred cattle. No commercial entries.

##### **Breeder's Herd**

One Entry per Exhibitor

Four Animals bred by the Exhibitor

Both sexes represented

Animals must be shown in previous classes

Animals must come from entrant, entrant's immediate family or entrant's immediate family farm

**Get of Sire**

One Entry per Exhibitor  
Three Animals from the Same Sire  
Both sexes represented  
Animals must be shown in previous classes

**Progeny of Dam**

One Entry per Exhibitor  
Two Animals from the Same Dam  
Must be shown in previous classes

**Showmanship****National Classic**

- a. Entrants must have competed in the Sire Summary and Herdsman Quiz and Judging Competition at the scheduled competition time unless prior arrangements have been made, to be eligible to compete in Showmanship and confirmation or be allowed to fit cattle.
- b. Entrants must be members of the YCSA.
- c. Each entrant must use the same animal for all phases of the Showmanship Contest.
- d. Entrants may borrow an animal from another YCSA member for the Showmanship competition.
- e. The top 3 placing entrants from each age division are eligible to compete in the Supreme Final.

**Provincial Classic**

- a. Entrants must have competed in the Sire Summary and Herdsman Quiz and Judging Competition to be eligible to compete in Showmanship.
- b. All Entrants are required to be members of the YCSA. Judges and format may be decided upon by the Provincial YCSA board. The YCSA Board of Directors as well as the YCSA Coordinator reserves the right to override the Provincial YCSA Board of Directors.

**Judging**

- a. The judging competition may be made up of any or all of the following components: oral reasons, written reasons, show-ring judging, visual identification, and EPD judging.
- b. All components of the judging competition will score equally in the final tabulations.
- c. Placing classes will be worth 50 points per class, reasons will be worth 50 points per class.
- d. The Judge and Ring-person will be weighted equally in a Show-ring Judging class. Appropriate dress is required.
- e. Specific rules will be announced prior to each judging competition.

- f. While the competitions are in progress there shall be no conferring between contestants or between parents and/or advisors and contestants.
- g. Contestants must remain with their assigned groups throughout the entire contest unless otherwise directed by the YCSA Coordinator or an attending Show Official.

### **Herdsman & Sire Summary Quiz**

- a. The quiz will consist of multiple choice and true/false questions.
- b. A maximum of 1 hour will be allowed.
- c. All necessary materials will be provided.
- d. Conferring with other contestants, use of notes or any other form of cheating will be grounds for disqualification of a contestant.
- e. Provincial/Regional Quizzes will be different than those at the National.

### **Public Speaking**

- a. Contestants will speak on a pre-assigned topic.
- b. All contestants will be present in the competition area 15 minutes prior to the competitions scheduled start time.
- c. Speeches will be 3 to 7 minutes in length.
- d. Score: Knowledge 20%, Organization 10%, Presentation 40%, General Effectiveness 30%= 100%

### **Sales Talk**

The Sales Talk uses a live setting complete with a cow, heifer or bull or a photo (no larger than 8X10) and potential buyer(s) being the judge(s). The purpose of this contest is to evaluate the effectiveness of the contestant's ability to merchandise cattle in a real life situation The competition is designed to be conversation oriented vs a formal presentation.

- a. Pee Wees and Novice participants may sell any item or object. It does not have to be a cow. Length of time is 1-3 minutes.
- b. Contestants may use a live animal or a photo (no larger than 8X10) as the subject of the Sales Talk. Contestants may use an animal other than their own. The contestant may hold or tie the animal, or have another entrant hold the animal during the talk. The animal is not to be fitted.
- c. Immediately preceding the talk, contestants selling registered animals will be required to provide the judges with a registration certificate for the animal being "sold". The judges will use the registration certificate to evaluate the accuracy of pedigree and performance information provided by the contestant and to also ask questions. If a registration paper is not presented, 5 marks will be deducted from the score. Must have physical registration paper, cannot use your phone. Commercial animals do not need a registration paper.

- d. Additional support photos may be used (no larger than 8X10).
- e. Scoring: Knowledge of the animal they are selling (25%), ability to relate important information about the animal (25%), organization and style (25%), poise and delivery (25%) = 100%
- f. Sales Talk will be 4-6minutes in length. Time elapsed will be indicated during the contest so that contestants are aware of the time constraints.

### **Interview Competition**

The interview competition gives participants the opportunity to enhance their interview skills and to prepare an effective resume.

- a. Contestants must be seniors.
- b. Contestants must submit in 25 words or less the position for which they intend to interview.
- c. Contestants are required to supply an updated resume and dress appropriately for the interview. Interviews will last approximately 15 minutes. After the interview is complete, there will be a one-on-one critique of the interview and applicants resume.
- d. Judging will be based on Interview Skills (50%), Resume (25%), and appearance/overall effectiveness (25%).

### **Photography**

- a) One entry per exhibitor.
- b) Photo must be taken by the member exhibiting it.
- c) Photography is to be a maximum size of 5"X 7" and submitted without framing or presentation.
- d) Photo must represent one of the following categories:
  - i. Simmental Animal- focus of the picture is the Simmental Animal
  - ii. Simmental Scenery- focus of the picture is split between the Simmental animals and the background/location of the photo
  - iii. Simmental Animals and People- focus of the picture includes Simmental animals and people.
- e) Photograph entries are to be brought to the Classic at Registration.
- f) All categories will be judged together.
- g) Score: Quality 35%, Originality 25%, Clarity 40% = 100%

### **Art Competition**

- a) Artwork submitted must be original work by the junior exhibiting it.
- b) Artwork is to depict something related to the Simmental industry.
- c) Artwork cannot be computer generated.
- d) Any art medium may be used (pencil, paint, clay, wood, etc)
- e) All mediums will be judged together.
- f) Artwork will be kept on display for the duration of the show and will be returned to the artist after the show.



- g) Artwork entries are to be brought to the Classic at Registration.
- h) One entry per exhibitor
- i) Score: Skill/Quality 20%, Originality 40%, Creativity 40% = 100%

### **Graphic Design Competition**

- a) Graphic Design must be original work by the junior exhibiting it
- b) One entry per exhibitor
- c) Must be created using computer technology and printed on paper
- d) The graphic design must promote the Simmental breed, the YCSA organization or a Simmental individual herd/animal.
- e) Examples of entries are flyers, posters, advertisements, newsletters, brochures, etc.
- f) Entries must be brought to the National Classic registration where they will be judged and on display
- g) Score: Skill/Quality 35%, Originality/Creativity 30%, Clarity of what is being promoted 35%

### **Print Marketing**

- a) Member is required to create an advertisement.
- b) This ad must promote a topic to be distributed and completed at the National Classic.
- c) All supplies will be provided at the show.
- d) Judging Criteria: 35% clarity of what is being promoted, 30% Neat and Organized, 35% Originality of Design

### **Scrapbooking**

- a) Scrapbooks must be completed by the member exhibiting.
- b) An agriculture theme should be found in the scrapbook.
- c) Scrapbooks can include photographs, newspaper and magazine clippings, programs from events, etc.
- d) Scrapbook entries should be brought to National Classic registration where they will be judged and on display.
- e) Judging Criteria: 25% Cover, 25% Creativity(color, use of materials, page decoration), 25% Originality (theme uniqueness), 25% Neatness and Organized

### **Spirit of Youth Award**

Judging occurs while the entire competition is on.

- a. Score: 25% Friendly/Fun, 25% Team Player, 25% Enthusiastic, 25% Leadership Qualities = 100%

**Young Canadian Simmental Association**  
**2018/2019 Board of Directors**

**Krista Whalen –President & Quebec Director**

(819) 679-7964

kristawhalenphotography@hotmail.com

**Lisa Reich – 1<sup>st</sup> Vice President & Alberta Director**

(780) 898-2934

lisa\_reich1996@hotmail.com

**Allison Booth – 2<sup>nd</sup> Vice President & Director at Large**

(506) 229-3244

allisonbooth101@hotmail.com

**Mackenzie Skeels – Director at Large**

(403) 704-9981

kenielabrie@icloud.com

**Dayne Whelan – Saskatchewan Director**

(306) 371-2955

whelan\_dayne@hotmail.com

**Gracie Falconer – Manitoba Director**

(204) 576-0163

gmfalconer@hotmail.com

**Montana Stillman-Loyst – Ontario Director**

(705) 957-7890

aloyst13@hotmail.ca

**Connor Morse – Maritimes Director**

(902) 844-0286

cdmsimmentals@gmail.com